

SCGB2A2 Antibody
Purified Mouse Monoclonal Antibody
Catalog # AO1478a**Specification**

SCGB2A2 Antibody - Product Information

Application	WB, IHC, FC, ICC, E
Primary Accession	Q13296
Reactivity	Human
Host	Mouse
Clonality	Monoclonal
Isotype	IgG1
Calculated MW	11kDa KDa

Description

Mammaglobin is a gene that is expressed almost exclusively in the normal breast epithelium and human breast cancer. It is a member of the secretoglobin gene family and forms a heterodimer with lipophilin B. It has been suggested that mammaglobin may be a useful marker for breast cancer clinical research. Studies investigating the detection of mRNA by RT PCR from circulating carcinoma cells in the peripheral blood of breast cancer patients have shown that mammaglobin is a highly specific marker and correlates with several prognostic factors, such as lymph node involvement. Tissue specificity: Mammary gland specific. Over-expressed in breast cancer.

Immunogen

Purified recombinant fragment of human SCGB2A2 expressed in E. Coli.

Formulation

Ascitic fluid containing 0.03% sodium azide.

SCGB2A2 Antibody - Additional Information

Gene ID 4250

Other Names

Mammaglobin-A, Mammaglobin-1, Secretoglobin family 2A member 2, SCGB2A2, MGB1, UGB2

Dilution

WB~~1/500 - 1/2000

IHC~~1/200 - 1/1000

FC~~1/200 - 1/400

ICC~~N/A

E~~N/A

Storage

Maintain refrigerated at 2-8°C for up to 6 months. For long term storage store at -20°C in small aliquots to prevent freeze-thaw cycles.

Precautions

SCGB2A2 Antibody is for research use only and not for use in diagnostic or therapeutic procedures.

SCGB2A2 Antibody - Protein Information

Name SCGB2A2

Synonyms MGB1, UGB2

Cellular Location

Secreted.

Tissue Location

Mammary gland specific. Over-expressed in breast cancer

SCGB2A2 Antibody - Protocols

Provided below are standard protocols that you may find useful for product applications.

- [Western Blot](#)
- [Blocking Peptides](#)
- [Dot Blot](#)
- [Immunohistochemistry](#)
- [Immunofluorescence](#)
- [Immunoprecipitation](#)
- [Flow Cytometry](#)
- [Cell Culture](#)

SCGB2A2 Antibody - Images

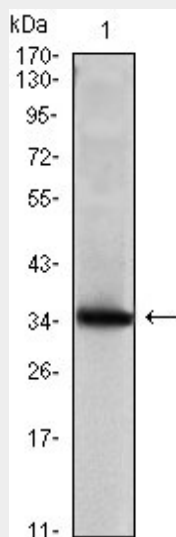


Figure 1: Western blot analysis using SCGB2A2 mAb against human SCGB2A2 (AA: 2-93) recombinant protein. (Expected MW is 35.8 kDa)

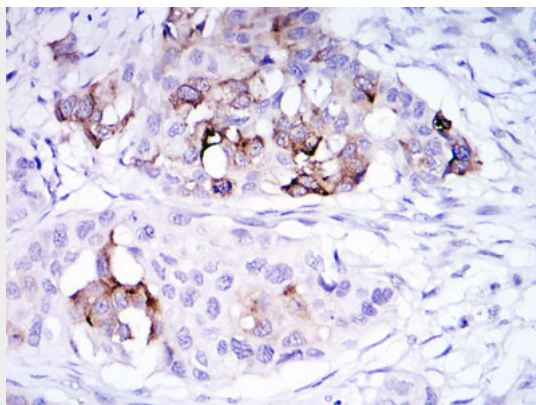


Figure 2: Immunohistochemical analysis of paraffin-embedded mammary cancer tissues using SCGB2A2 mouse mAb with DAB staining.

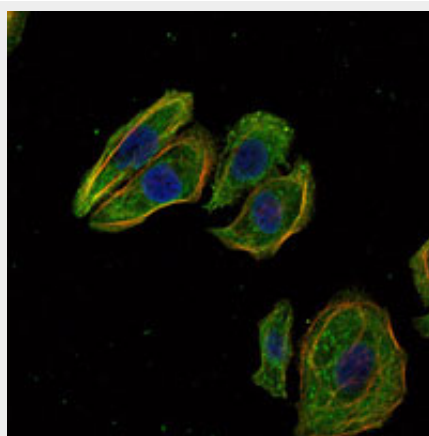


Figure 3: Immunofluorescence analysis of Hela cells using SCGB2A2 mouse mAb (green). Blue: DRAQ5 fluorescent DNA dye. Red: Actin filaments have been labeled with Alexa Fluor-555 phalloidin.

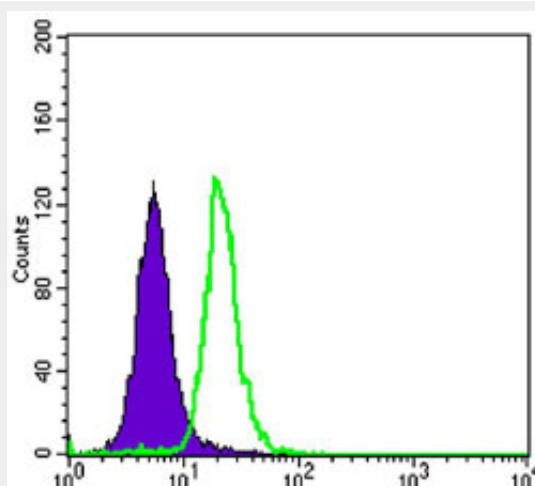


Figure 4: Flow cytometric analysis of SK-BR-3 cells using SCGB2A2 mouse mAb (green) and negative control (purple).

SCGB2A2 Antibody - References

1. Ann Oncol. 2006 Jun;17 Suppl 7:vii41-5.
2. Mod Pathol. 2007 Feb;20(2):208-14.